

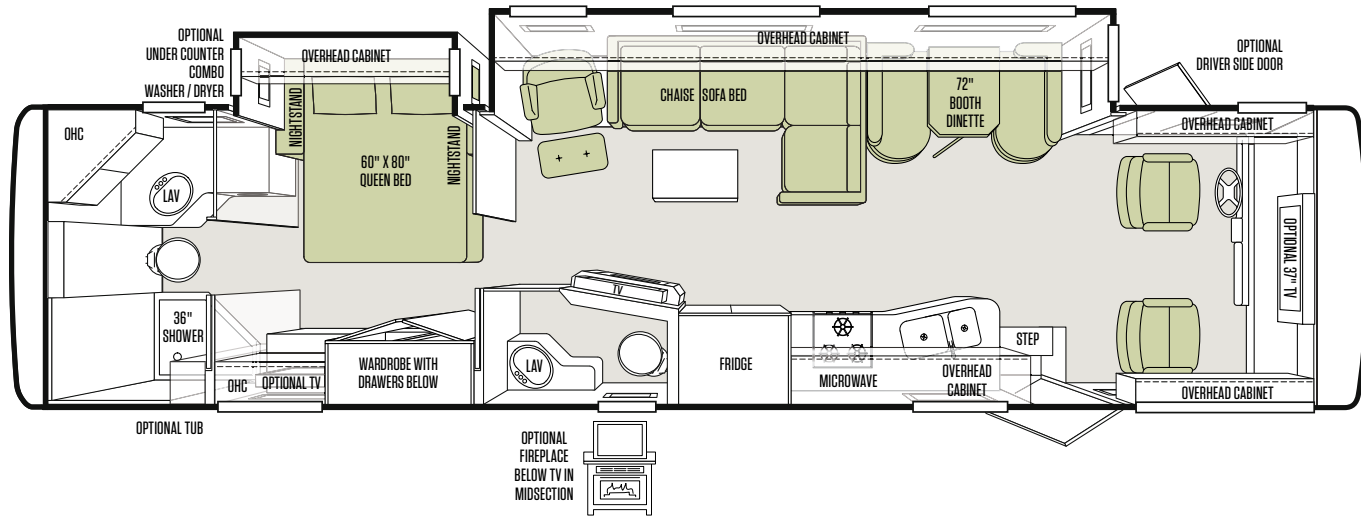
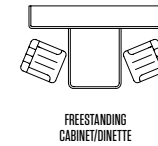


NEW Allegro® 36 LA Floor Plan & Options

At Tiffin Motorhomes, we want you to feel right at home wherever you are. That's why we're continually introducing new floor plans to expand the available options. Tiffin engineers seek advice on every design from the experts, the folks who live and travel in our coaches every day—our customers. So, regardless of which layout you choose, you can rest assured it has been road tested for comfort and convenience. Now, all you have to do is decide. For more information on the Allegro and our other motor homes visit tiffinmotorhomes.com



SCAN WITH YOUR
SMART PHONE
FOR MORE INFO



Weights & Measures

- Overall Length (Approximate): 36' 10"
- Overall Height with Roof Air (Maximum): 12' 10"
- Minimum Garage Height: 13'
- Interior Height: 83.5"
- Overall Width: 101"
- Interior Width: 96"
- Basement Storage (Cubic Feet Approximate): 203
- LPG Tank (can only be filled to 80% capacity): 24 Gallons
- Fresh Water: 70 Gallons
- Black Water: 50 Gallons
- Grey Water: 66 Gallons
- Alternator Amps: 175
- Wheel Base: 252"
- Tire Size: 255/80R22.5-GXRV
- Trailer Hitch Capacity: 5,000 Lb.
- Fuel Tank: 75 Gallons

Allegro® 36 LA Specifications

Mechanical

- TorqShift® 5-speed Automatic Overdrive with Tow/Haul Mode
- Cruise Control
- Emergency Start Switch

Ford Chassis

- Engine: 362 HP - 6.8 L V 10
- Torque (Lb. - Ft. Max Net): 457 @ 3,250
- GVWR: 24,000 Lb.
- GAWR—Front: 8,000 Lb.
- GAWR—Rear: 15,000 Lb.
- GCWR: 26,000 Lb.

Exterior

- Fiberglass Front & Rear Caps
- Fiberglass Roof Cap
- Tinted One-piece Windshield
- 5.5 kw Onan® Generator
- Two 13,500 BTU High Profile Roof A/Cs (High Efficiency)
- Quiet A/C Roof-ducted System
- Double Electric Step
- 1/4" Thick Single Pane Windows
- Park Telephone Ready
- Horizontal Mounted Wipers
- Heated Power Mirrors
- Exterior Patio Light
- Slide-out Awning(s)
- Hydraulic Automatic Leveling Jacks
- BASF Full-body Paint with Protective Film on Front Cap
- Two 6 V Auxiliary Batteries
- Exterior Rinse Hose/Shower
- Water Filtration System
- Low-point Water Drain Lines
- Lighted Plumbing Compartment
- Convenient Access Doors with Gas Shocks
- Ridged Long-life Storage Boxes
- Single Handle Lockable Storage Door Latches

- Heated Water & Holding Tank Compartments
- Digital TV Antenna & Cable-ready TV
- Side-view Cameras Activated by Turn Signals
- Power Patio Awning with Aluminum Weather Shield
- Front Cap Rock Guard Protection
- Water Heater Bypass System
- 50 Amp Service
- Black Holding Tank Flush System
- Gravity Water Fill
- Color Back-up Monitor
- 110 V Exterior Receptacle
- 110 V/12 V Converter
- Undercoating
- Roof Ladder
- External Tripod Satellite Hook-up
- Lighted Basement Storage

Exterior Options:

- 7.0 kw Onan® Generator
- Automatic Satellite Dish*
- One 15,000 BTU High Profile Roof A/C with Heat Pump (7.0 kw Generator Only)
- CB Antenna

General Interior

- High Gloss Raised Panel Hardwood Cabinet Doors
- Soft Touch Vinyl Ceiling
- Solid Wood Cabinet Faces
- Ball Bearing Drawer Slides
- Wall-to-wall Vinyl Tile Flooring Throughout Coach
- LED Bulbs in Ceiling Lights Only
- Scotchgard® Treated Fabrics
- Solar/Privacy RollEase® Shades
- Power Fantastic® Fans
- Tank Level Monitor System
- Smoke Detector
- 6-gallon DSI Gas/Electric Water Heater

- Carbon Monoxide Detector
- LPG Leak Detector

General Interior Options:

- Central Vacuum Cleaner
- Combo Washer/Dryer Under Counter in Back Bath
- Medium Alderwood, English Chestnut, or Cherry Bark Solid Cabinet Doors & Drawer Fronts

Cockpit

- Entry Floor Light
- Step Switch & 12 V Disconnect Switch
- Back-up Camera with Color Monitor
- Non-power Cloth Driver & Passenger Seats
- Lighted Instrument Panel
- CD Player & AM/FM Stereo
- Two Cupholders
- Passenger Slide Tray/Drawer
- 12 V Dash Receptacle
- Tilt Steering Wheel
- Dual Dash Fans
- Power Solar/Privacy Windshield Shades
- Manual Solar/Privacy Shades on Side Windows
- Fire Extinguisher
- Snack/Beverage Tray

Cockpit Options:

- Power Cloth Driver & Passenger Seats
- Power Halo Leather Driver & Passenger Seats
- Driver Door with Power Window
- Front Overhead TV

Living Area/Dinette

- Contemporary Booth Dinette with Large Pullout Storage Drawers
- Midsection TV in Entertainment Center
- Cloth Chaise Sofa/Sleeper on Driver Side
- Recliner & Ottoman
- Decorative Wall Art

Living Area/Dinette Options:

- Freestanding Dinette with Cabinets
- Halo Leather Chaise Sofa/Sleeper on Driver Side
- Home Theater Surround Sound System (Includes DVD Player)
- DVD Player (NA with Surround Sound System)
- Fireplace below Midsection TV

Kitchen

- Single Lever Bronze Sink Faucet
- Spray Rinsers at Sink Faucet
- Under Counter Mount Double Bowl Stainless Steel Sink
- Solid Surface Kitchen Countertops
- 3-burner Recessed Cooktop with Solid Surface Covers
- Gas Oven
- Microwave with Exterior Venting
- Gas/Electric 8 Cubic Foot Refrigerator/Freezer

Kitchen Options:

- Convection Microwave
- Icemaker in Freezer
- Solid Wood Refrigerator Panels

Bath

- Medicine Cabinet
- Skylight in Shower
- Water Pump Switch
- Fantastic® Fan with Wall Switch (Water Closet Only)

- Molded Fiberglass One-piece Shower
- Bronze Vanity Faucet

Bath Options:

- Tub in Place of Shower

Bedroom

- Wardrobe with Automatic Light
- Bed Comforter & Throw Pillows
- Innerspring Queen Mattress (60" x 80")
- Lift Bed with Full Storage
- Tile Flooring
- Solar/Privacy RollEase® Shades

Bedroom Options:

- TV

10-year Limited Frame Warranty

We warranty the frame of the walls, floors and roof for 10 years.

5-year Limited Sidewall Bond Warranty

We warranty the sidewall against delamination between the outside fiberglass and the inner frame for 5 years.

* High-definition programming is not available on a domed satellite antenna unless you subscribe to DISH Network®.



105 2ND STREET NW, RED BAY, ALABAMA 35582
CALL 256/356.8661 FAX 256/356.8219

TIFFINMOTORHOMES.COM