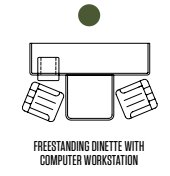
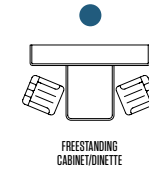
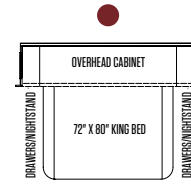
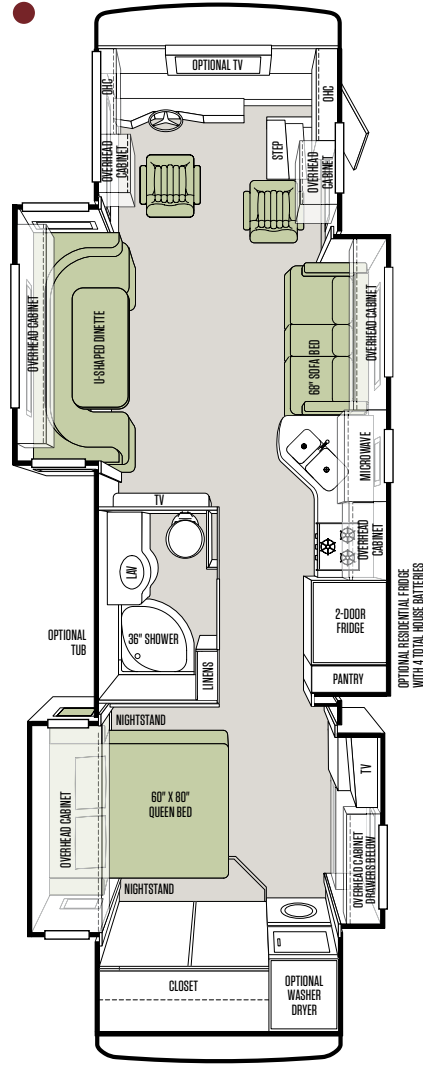


Floor Plans* & Options

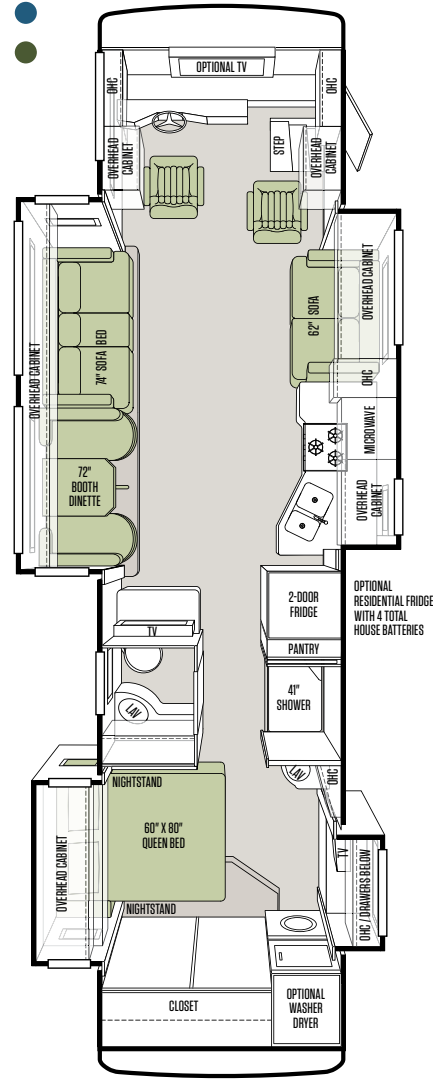
There's an Allegro RED floor plan perfect for how you live. That's because all Tiffin floor plans are based on ideas and recommendations from customers like you, folks who share your lifestyle needs. We actively survey owners for their suggestions on modifications that can help improve the flow and functionality of our layouts. Our engineers utilize every single inch of each plan, giving you room to roam on the inside while you roam on the outside.



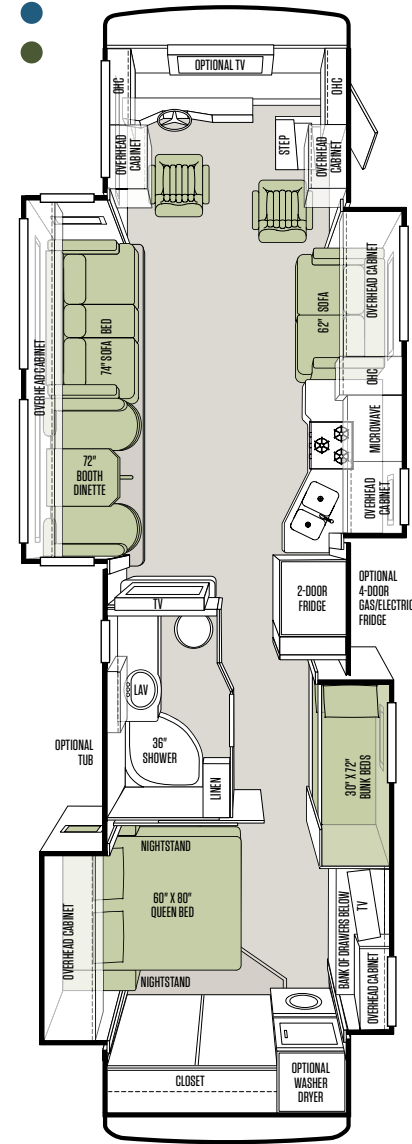
34 QFA



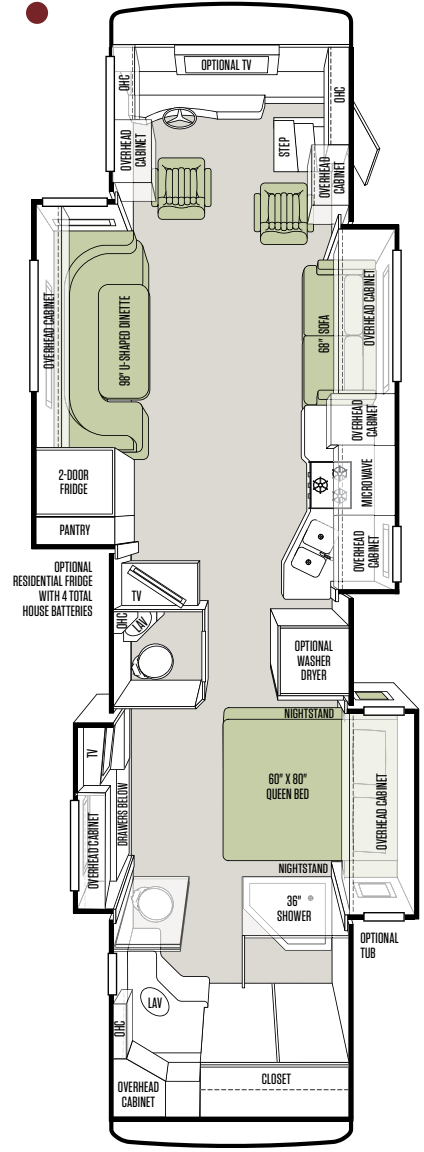
36 QSA



38 QBA



38 QRA



*Additional floor plans may be added throughout the model year. For a complete and current list of available floor plans and options, visit us online at tiffinmotorhomes.com

Interior Décor

As attractive as Tiffin coaches are on the outside, the interior is where we excel. After all, this is the place you call home. Our interior designers have put together a selection of neutral color schemes to suit many decorating styles. Last year's popular Marble option is available, along with two new interior schemes, French Roast and Raven. Each option beautifully complements the tones found in the decorative accents and hardwood cabinetry handcrafted in our Red Bay mill shop.

Cabinets



Medium Alderwood



English Chestnut



Cherry Bark

Flooring & Countertops



Carpet



Tile



Countertop

French Roast Fabric Suite

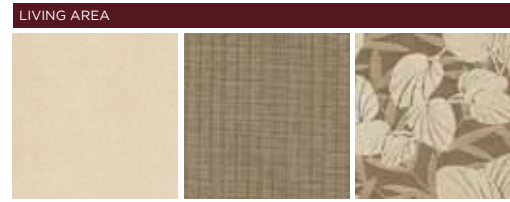


Sofa

Accent

Dinette

Marble Fabric Suite

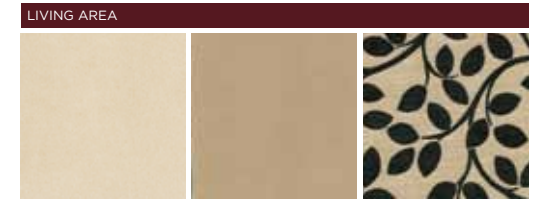


Sofa

Accent

Dinette

Raven Fabric Suite



Sofa

Accent

Dinette



Main

Accent



Main

Accent



Main

Accent

Allegro RED cabinet doors are made of solid wood, and all cabinet finishes are available in combination with any fabric suite. All options may not be available in every model. Because of progressive improvements, specifications, standard & optional equipment are subject to change without notice or obligation. For a complete and up-to-date list of available options and specifications, visit tiffinmotorhomes.com

Full-body Paint Schemes

Full-body paint is standard on the 2012 Allegro RED, as is the protective film that seals in the paint to help retain the fresh-painted shine. Tiffin's paint facility is one of the largest in the country and features a state-of-the-art air filtration system that ensures an impeccable finish. Quality control checks are integrated into the painting process. Meticulous attention is given to every single inch of the Allegro RED to produce the most precise application.



Gold Coral



Maroon Coral



Silver Sand



Sunlit Sand

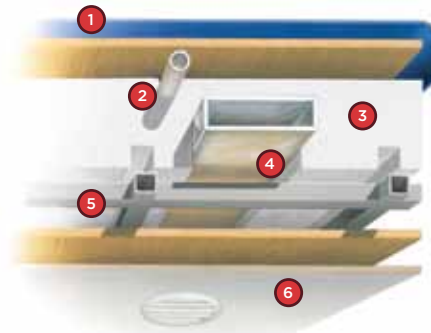


Rocky Mountain Brown

Structural/Construction

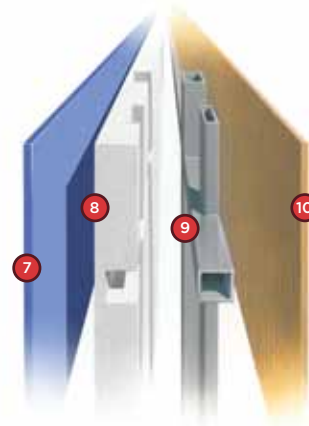
STANDARD ON ALL MODELS:

- Laminated Floor, Sidewall & Roof
- Steel/Aluminum Reinforced Structure
- One-piece Molded Fiberglass Roof Cap



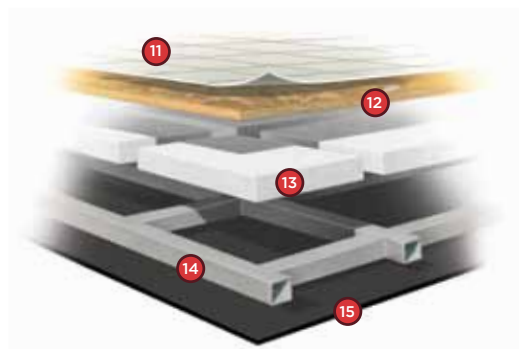
Roof

- 1 One-piece, moisture resistant molded fiberglass roof cap provides insulation and strength and prevents water intrusion
- 2 A/C Condensation Drainage System that runs internally through the roof insulation and down the sidewalls, redirecting water underneath the motor home
- 3 5 1/2" formed insulation
- 4 Quiet Air Cooling System with return air and foil-wrapped cooling exhaust ducts
- 5 Durable, tubular aluminum roof skeleton
- 6 Easy-to-clean soft touch vinyl ceiling panel



Sidewall*

- 7 Gel-coat fiberglass outside wall panel
- 8 High-performance thermal insulation
- 9 Durable, yet lightweight, tubular aluminum wall skeleton
- 10 Decorative inside wall panel



Floor

- 11 Vinyl tile floor bonded to high-impact oriented strand board
- 12 High-level engineered oriented strand board
- 13 High-performance thermal insulation
- 14 Durable, tubular floor skeleton
- 15 Woven moisture barrier material

*All sidewalls are approximately 2" thick.

Specifications

Automotive

STANDARD ON ALL MODELS:

- Raised Rail Chassis Frame
- Air Ride Suspension
- Full Air Brakes
- Exhaust Brake

Chassis

FREIGHTLINER® REAR ENGINE DIESEL CHASSIS:

Engine	Cummins ISB 6.7-liter Electronic Diesel, Turbocharged, Aftercooled			
Peak HP	340 HP @ 2,600 RPM			
Peak Torque (Lb.- Ft. Max Net)	660 @ 1,600			
Transmission	Allison 2500 MH 6-speed Automatic with Lock-up			
GAWR—Front	12,000 Lb.			
GAWR—Rear	17,500 Lb.			
GVWR	29,500 Lb.			
GCWR	33,000 Lb.			
Wheel Base	208" (34 QFA)	228" (36 QSA)	252" (38 QBA)	252" (38 QRA)
Tire Size	275/80R22.5			
Fuel Tank (Gallons)—Dual Fuel Fill	100			
Alternator Amps	160			
Trailer Hitch Capacity	5,000 Lb.			

Weights & Measures

OVERALL:	34 QFA	36 QSA	38 QBA	38 QRA
Overall Length (Approximate)	34' 10"	36' 9"	38' 9"	38' 9"
Overall Height with Roof Air (Maximum)	12' 10"	12' 10"	12' 10"	12' 10"
Interior Height	84"	84"	84"	84"
Overall Width	101"	101"	101"	101"
Interior Width	96"	96"	96"	96"
Fresh Water (Gallons)	90	90	90	90
Black Water (Gallons)	50	50	50	50
Grey Water (Gallons)	70	70	70	70
LPG Tank (Gallons; can only be filled to 80% capacity)	24	24	24	24
Basement Storage (Cubic Feet - Approximate)	87	150	160	160
Minimum Garage Height	13'	13'	13'	13'
DEF Tank* (Gallons)	13	13	13	13

*Diesel Exhaust Fluid (DEF) is the active component used in Selective Catalytic Reduction (SCR) engines to reduce nitrogen oxide emissions by 90% to meet EPA standards.

All options may not be available in every model. Because of progressive improvements, specifications, standard & optional equipment are subject to change without notice or obligation. For a complete and up-to-date list of available options and specifications, visit tiffinmotorhomes.com

Exterior

STANDARD ON ALL MODELS:

- Fiberglass Front & Rear Caps
- Tinted One-piece Windshield
- 6.0 kw Onan® Generator
- Horizontal Mounted Wipers
- Heated Power Mirrors
- Exterior Patio Light
- Power Patio Awning with Aluminum Weather Shield
- Slide-out Awning(s)
- Chrome Wheel Liners
- Quiet A/C Roof-ducted System
- Two 13,500 BTU High Profile Roof Air Conditioners
- Double Electric Step
- 1/4" Thick Single Pane Windows
- Convenient Access Doors with Gas Shocks
- Ridged Long-life Storage Boxes
- Single Handle Lockable Storage Door Latches
- Heated Water & Holding Tank Compartments
- Four 6 V Auxiliary Batteries
- Park Telephone Ready
- Digital TV Antenna
- Cable Ready TV
- 50 Amp Service
- Black Holding Tank Flush System
- Exterior Rinse Hose/Shower
- Gravity Water Fill
- Color Back-up Monitor
- 110 V Exterior Receptacle
- Undercoating
- Roof Ladder
- External Tripod Satellite Hook-up
- Exterior Storage Compartment Lights
- Side-view Cameras Activated by Turn Signals
- BASF Full-body Paint with Protective Film on Front Cap
- Hydraulic Automatic Leveling Jacks

AVAILABLE OPTIONS:	34 QFA	36 QSA	38 QBA	38 QRA
8.0 kw Onan® Generator	O	O	O	O
Automatic Satellite Dish*	O	O	O	O
Automatic Entry Door Awning	O	O	O	O
Hadley Air Horns	O	O	O	O
Two 15,000 BTU High Profile Roof Air Conditioners with Heat Pump (8.0 kw Generator Only)	O	O	O	O
CB Antenna	O	O	O	O

*High-definition programming is not available on a domed satellite antenna unless you subscribe to DISH Network®.

Cockpit

STANDARD ON ALL MODELS:

- Entry Floor Light
- Tilt Steering Wheel
- Dual Dash Fans
- Lighted Instrument Panel
- CD Player & AM/FM Stereo
- 12 V Dash Receptacle
- Power Solar/Privacy Windshield Shades
- Step Switch & 12 V Disconnect Switch
- Non-power Cloth Driver & Passenger Seats
- Manual Driver & Passenger Solar/Privacy Shades
- Fire Extinguisher
- Snack/Beverage Tray
- Adjustable Seatbelt Brackets

AVAILABLE OPTIONS:	34 QFA	36 QSA	38 QBA	38 QRA
Power Cloth Driver & Passenger Seats	O	O	O	O
Power Halo Leather Driver & Passenger Seats	O	O	O	O
Front Overhead TV	O	O	O	O

Living Area/Dinette

STANDARD ON ALL MODELS:

- Booth Dinette with Large Pullout Storage Drawers
- Decorative Wall Hanging

AVAILABLE OPTIONS:	34 QFA	36 QSA	38 QBA	38 QRA
Cloth DE Sofa/Sleeper on Passenger Side	NA	S	S	NA
Halo Leather DE Sofa/Sleeper on Passenger Side	NA	O	O	NA
Cloth Air Coil Hide-A-Bed Sofa/Sleeper on Passenger Side	S	NA	NA	S
Halo Leather Air Coil Hide-A-Bed Sofa/Sleeper on Passenger Side	O	NA	NA	O
Cloth Air Coil Hide-A-Bed Sofa/Sleeper on Driver Side	NA	O	O	NA
Halo Leather Air Coil Hide-A-Bed Sofa/Sleeper on Driver Side	NA	O	O	NA
Cloth DE Sofa/Sleeper on Driver Side	NA	S	S	NA
Halo Leather DE Sofa/Sleeper on Driver Side	NA	O	O	NA
Cloth U-shaped Dinette with Drop Down Table	S	NA	NA	S
Halo Leather U-shaped Dinette with Drop Down Table	O	NA	NA	O
Freestanding Dinette with Built-in Cabinets	NA	O	O	NA
Freestanding Dinette with Computer Workstation	NA	O	O	NA
DVD Player (NA with Surround Sound System)	O	O	O	O
Home Theater Surround Sound System (Includes DVD Player)	O	O	O	O

Kitchen

STANDARD EQUIPMENT ON ALL MODELS:

- Double Bowl Kitchen Sink with Single Lever Bronze Faucet
- Solid Surface Countertops
- Stacked Drawers
- Solid Surface Backsplashes
- 3-burner Recessed Cooktop with Gas Oven
- Microwave with Exterior Venting
- 10 Cubic Foot 2-door Refrigerator

AVAILABLE OPTIONS:	34 QFA	36 QSA	38 QBA	38 QRA
Convection Microwave	O	O	O	O
Cooktop and Convection Microwave (No Gas Oven)	O	O	O	O
Icemaker in 2-door Refrigerator	O	O	O	O
4-door Gas/Electric Refrigerator with Icemaker	O	O	O	O
Solid Wood Refrigerator Panels	O	O	O	O
Residential Refrigerator with 4 Total House Batteries	O	O	NA	O

Bath

STANDARD EQUIPMENT ON ALL MODELS:

- Medicine Cabinet
- Skylight in Shower
- Bronze Vanity Faucet
- Molded Fiberglass One-piece Shower
- Solid Surface Vanity Top
- Fantastic® Fan

AVAILABLE OPTIONS:	34 QFA	36 QSA	38 QBA	38 QRA
Tub (in Place of Shower)	O	NA	O	O

Bedroom

STANDARD EQUIPMENT ON ALL MODELS:

- Wardrobe with Automatic Light
- Bed Comforter with Throw Pillows
- TV
- Tile Flooring
- Inner Spring Queen Mattress (60" x 80")
- Solar/Privacy RollEase® Shades

AVAILABLE OPTIONS:	34 QFA	36 QSA	38 QBA	38 QRA
Bunk Beds (30" x 72") with Bunk Ladder/Convertible Wardrobe	NA	NA	S	NA
DVD Monitors in Bunk Beds	NA	NA	O	NA
King Bed (72" x 80")	O	NA	NA	O

Interior

STANDARD EQUIPMENT ON ALL MODELS:

- Raised Panel Hardwood Cabinet Doors
- Soft Touch Vinyl Ceiling
- Solid Wood Cabinet Faces
- LED Bulbs in Ceiling Lights Only
- Midsection TV in Entertainment Center
- Wall-to-wall Vinyl Tile Flooring Throughout Coach
- Ball Bearing Drawer Slides
- Scotchgard® Treated Fabrics
- Solar/Privacy RollEase® Shades
- Power Roof Vents
- Tank Level Monitor System
- Smoke Detector
- 10-gallon DSI Gas/Electric Water Heater
- Folding Step Well Cover
- Carbon Monoxide Detector
- LPG Leak Detector

AVAILABLE OPTIONS:	34 QFA	36 QSA	38 QBA	38 QRA
2000 Watt Inverter (Must Select with Residential Refrigerator)	O	O	O	O
Central Vacuum Cleaner	O	O	O	O
Combo Washer/Dryer	O	O	O	O
Stacked Washer/Dryer	O	O	O	O
Cherry Bark Solid Cabinet Doors & Drawer Fronts	O	O	O	O
English Chestnut Solid Cabinet Doors & Drawer Fronts	O	O	O	O
Medium Alderwood Solid Cabinet Doors & Drawer Fronts	O	O	O	O